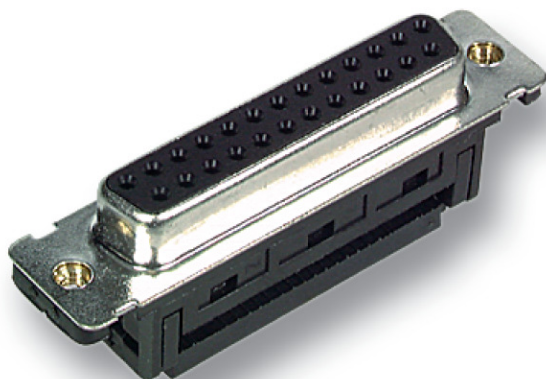


# DATASHEET

## DSub jacks, IDC contacts, flat, UNC thread



### Description

- Quality level III
- UNC thread
- 50 mating cycles

### General data

Model | jack (jack)

### Electrical characteristics

Contact type | female (female)  
 Connection type | other

### Available variants

Article no.	Title	Number of poles	Type
29015.1	Dsub Jack, IDC contacts,flat 09-pole,E-DFF 09 LPIII/Z UNC	9	EDFF 09 LPIII/Z UNC
29016.1	Dsub Jack, IDC contacts,flat 15-pole,E-DFF 09 LPIII/Z UNC	15	EDFF 15 LPIII/Z UNC
29017.1	Dsub Jack, IDC contacts,flat 25-pole,E-DFF 09 LPIII/Z UNC	25	EDFF 25 LPIII/Z UNC
29018.1	Dsub Jack, IDC contacts,flat 37-pole,E-DFF 09 LPIII/Z UNC	37	EDFF 37 LPIII/Z UNC

This datasheet was created automatically on 25-07-2021 . Technical changes reserved.



# DATASHEET

## DSub jacks, IDC contacts, flat, UNC thread

### Technical drawings

**21.40 MAX. (.843)** AFTER CRIMPING POSITION  
**18.20±0.38 / (.717±.015)** AFTER CRIMPING POSITION  
**20.65±0.38 / (.813±.015)** PRE-CRIMP POSITION  
**10.70±0.25 (.421±.010)**  
**9.00±0.25 (.354±.010)**  
**6.00±0.25 (.236±.010)**  
**2.70±0.13 (.106±.005)**  
**2.77 TYP. (.109)**  
**7.90±0.25 (.311±.010)**  
**2.84 (.112)**  
**12.55±0.38 (.494±.015)**  
**4#-40UNC-2B**  
**11.45±0.13 (.449±.005)** REAR MOUNT  
**13.03±0.13 (.513±.005)** FRONT MOUNT  
**6.52±0.13 (.257±.005)** FRONT MOUNT  
**5.71±0.13 (.225±.005)** REAR MOUNT  
**10 TYP. OPTIONAL (REAR MOUNT ONLY)**  
**3.04±0.05 (.120±.002)**  
**FOR FRONT MOUNTING**  
**RECOMMENDED PANEL CUTOUT DIMENSIONS**

**SPECIFICATION :**  
 .CURRENT RATING : 1 AMP.  
 .INSULATION RESISTANCE : >1000 MΩ MIN. (AT 500 V DC)  
 .DIELECTRIC WITHSTANDING VOLTAGE : AC 500 V MIN. (FOR 1 MINUTE)  
 .OPERATING TEMPERATURE : -55°C TO 105°C  
 .CONTACT RESISTANCE : ≤ 15mΩ  
 .DIELECTRIC MATERIAL : PBT WITH GLASS-FIBER REINFORCED UL 94V-0  
 .COLOR : BLACK , BLUE , GRAY (OPTIONAL)  
 .CONTACT MATERIAL : PHOSPHOR BRONZE  
 .CONTACT PLATING : GOLD OVER NICKEL  
 .WIRE SIZE : AWG 26 & 28 STRANDED , 1.27mm CONDUCTOR CENTRE FLAT CABLE

54.84/(2.159)	59.08/(2.328)	60.73/(2.391)
38.38/(1.511)	42.52/(1.674)	44.27/(1.743)
24.66/(.971)	28.80/(1.134)	30.53/(1.202)
16.33/(.643)	20.47/(.806)	22.20/(.874)
H ±0.25 (±.010)	± 0.13/(.005) REAR MOUNTING	± 0.13/(.005) FRONT MOUNTING

**PART NO.**  
**29015/16/17/18.1**

This datasheet was created automatically on 25-07-2021 . Technical changes reserved.

